



WIDE FRAME WINDOWS

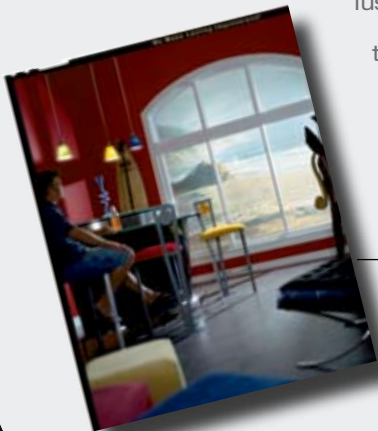


**Why go back to the basics when you can take them forward?**

Featuring a 3-1/4" frame, the Simonton Impressions® Wide Frame window features the look and style of classic wood windows, with the energy efficiency, strength and durability of vinyl. From the

fusion-welded construc-

tion and an optimal spacer system to advanced energy features and an assortment of options, the Simonton Impressions® Wide Frame window will meet your needs and provide years of beauty and satisfaction.





## WIDE FRAME WINDOWS

From the smallest detail the Simonton Impressions® Wide Frame window has been designed to increase energy savings, hinder weather penetration and provide low maintenance.

### Wide Frame Window Features

**3-1/4" Frame** Wider frame offers a more contoured, classic look.

**Welded Frame and Sash** Profiles are fused together to create a weathertight one-piece unit.

**Multiple-chambered Profiles** Vinyl profiles are filled with dead-air chambers that increase window insulation.

#### Dual Fin Weatherstripping

Creates a weather-resistant seal around operable sash.

**Integral Stucco Flange** Provides a seamless transition between the window and the outside of the stucco home.

**Integral 1-3/8" Nailing Fin** Available for new construction applications, this extension is attached to the main frame for easy installation.

**Air Lok™** Allows window to stay partially open for ventilation.

**Double-strength Glass** Provides increased strength and energy efficiency.

**Low E/Argon-filled Glass** Regionally specific glass package improves thermal performance year round.

**Sensor Glass®** In addition to standard Low E/Argon-filled glass and double-strength glass panes, this optional glass package adds the remarkable Super Spacer® solid silicone foam spacer for the ultimate in energy efficiency.

#### Power Seal Spacer System™



Power Seal Spacer System™

All Wide Frame windows feature Simonton's energy-efficient Power Seal Spacer System™. The dual-sealed system utilizes the U-channel Intercept® spacer for low conduction rates, and is combined with advanced adhesives that provide strength, moisture-resistance and thermal efficiency.

## Double and Single Slider

### Reinforced Interlocking Meeting Stile

Reinforced for increased strength, the overlapping, interlocking design tightly seals the sash.

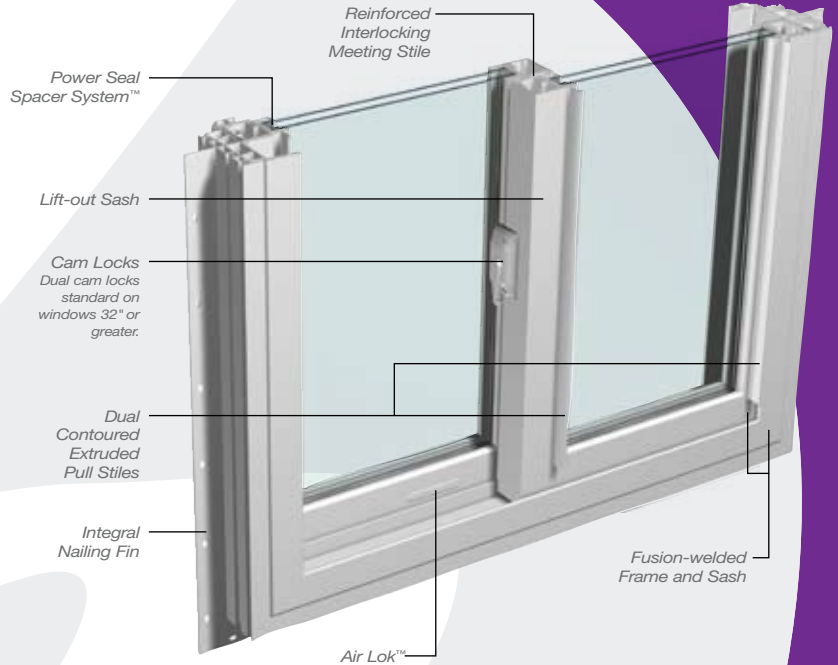
**Tandem Delrin® Rollers** Corrosion-resistant rollers that provide years of smooth operation.

### Dual Contoured Extruded Pull Stiles

Easy-to-grasp and molded into the sash for durability and trouble-free operation.

**Lift-out Sash Panels** Allows sash to be removed for easy cleaning.

**Contoured Exterior** Angled design furnishes a classic look for any style home.



## Double and Single Hung

**Sloped Pocket Sill** Slopes downward to quickly move water away from the window.

### Reinforced Lap-Lok® Meeting Rail

Sash is tightly sealed with an overlapping, interlocking design that is reinforced for increased strength.

### Stainless Steel Constant Force Coil

**Spring Balance System** A tightly wound, non-corrosive coil spring holds the sash in any position and will never need adjustment.

### Denny Clip™ Pivot System

Disc-shaped pivot system keeps the sash in perfect alignment.

**Flush-mount Tilt Latches** Allow sash to tilt in for easy cleaning.

### Dual Contoured Extruded Lift Rails

Molded into the sash for strength and durability, rails easily raise the sash.

**Operable Sash** Single Hung windows have one operable sash, while both sash operate on Double Hung windows.



All Simonton Impressions Wide Frame windows can be ordered to meet ENERGY STAR® guidelines.

**Double-lifetime Limited Warranty** Simonton Impressions® windows and doors are backed by a Double-lifetime Limited Warranty that can be transferred by the original property owner to the following owner of the home. The comprehensive warranty covers the vinyl, hardware, screens, glass units and labor. Please see the Simonton Impressions® warranty for complete details.

## OPTIONS & FEATURES



White Flat



Tan Sculptured



V-Groove

### Grid Patterns



Colonial



Diamond  
*(Available in V-Groove only)*



Victorian



Queen Anne



Perimeter



Double Perimeter



Double Queen Anne

### Colors



White



Tan



Single and Double Hung windows tilt in for easy cleaning, while Slider windows feature a lift-out sash panel to help with window maintenance.

**Specialty Grids** Between-the-glass grids allow easy cleaning, while providing a distinctive accent for your home. From flat and sculptured grids to assorted grid patterns and the elegant V-Groove style glass, a wide range of options helps you create the look you want.

**Specialty Glass** The benefits of specialty glass are varied – some provide increased safety, energy efficiency and privacy, while others add a stylish touch that will make your home unique. Detailed information is available in the Glass and Grid Options brochure and from your Simonton Impressions® dealer.



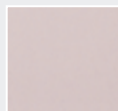
Rain



Glue Chip



Delta Frost



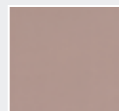
Bronze Tint



Reed



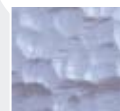
Grey Tint



Solarcool®  
Bronze



Obscure



Flemish

### Wide Frame Window Styles



Double Hung



Single Hung



2-lite Slider



3-lite Slider



Picture Capped Slider



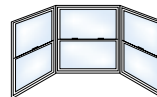
Picture



Geometrics



Bow



Bay



2019 E. Monte Vista Avenue, Vacaville, CA 95688 • 1-800-882-8922

**Corporate Headquarters:** 5300 Briscoe Road, P.O. Box 1646

Parkersburg, WV 26102-1646 • 1-800-SIMONTON • [www.simonton.com](http://www.simonton.com)

Ellenboro • Harrisville • Lyons • McAlester • Paris • Parkersburg • Pennsboro • Vacaville

Changes to the product(s) may have been made since publication. Please consult your authorized dealer prior to purchasing. Due to limitations in the printing process actual colors may vary from printed materials. Please see a sample of the product before making your final color selection. Simonton Windows®, We make lasting impressions®, Simonton Impressions®, Lap-Lok®, Sensor Glass® and the stylized "S" are registered trademarks and Air Lok™, Denny Clip™, and Power Seal Spacer System™ are trademarks of Simonton Building Products, Inc. Intercept® and Solarcool® are registered trademarks of PPG Industries, Inc. Super Spacer® is a registered trademark of Edgetech I.G., Inc. Delrin® is a registered trademark of e.i. DuPont. ©2007 Simonton Windows, Inc. Printed in U.S.A.